

# The New Web of Science

Preview access to our redesigned platform

27/10/2020

# The new Web of Science



## Inclusive interface

The Web of Science is committed to providing equitable access for all of your patrons by meeting current **accessibility** mandates.



## Faster page loads

Find the information you need faster with pages that load more quickly than in the current Web of Science.



## Improved design

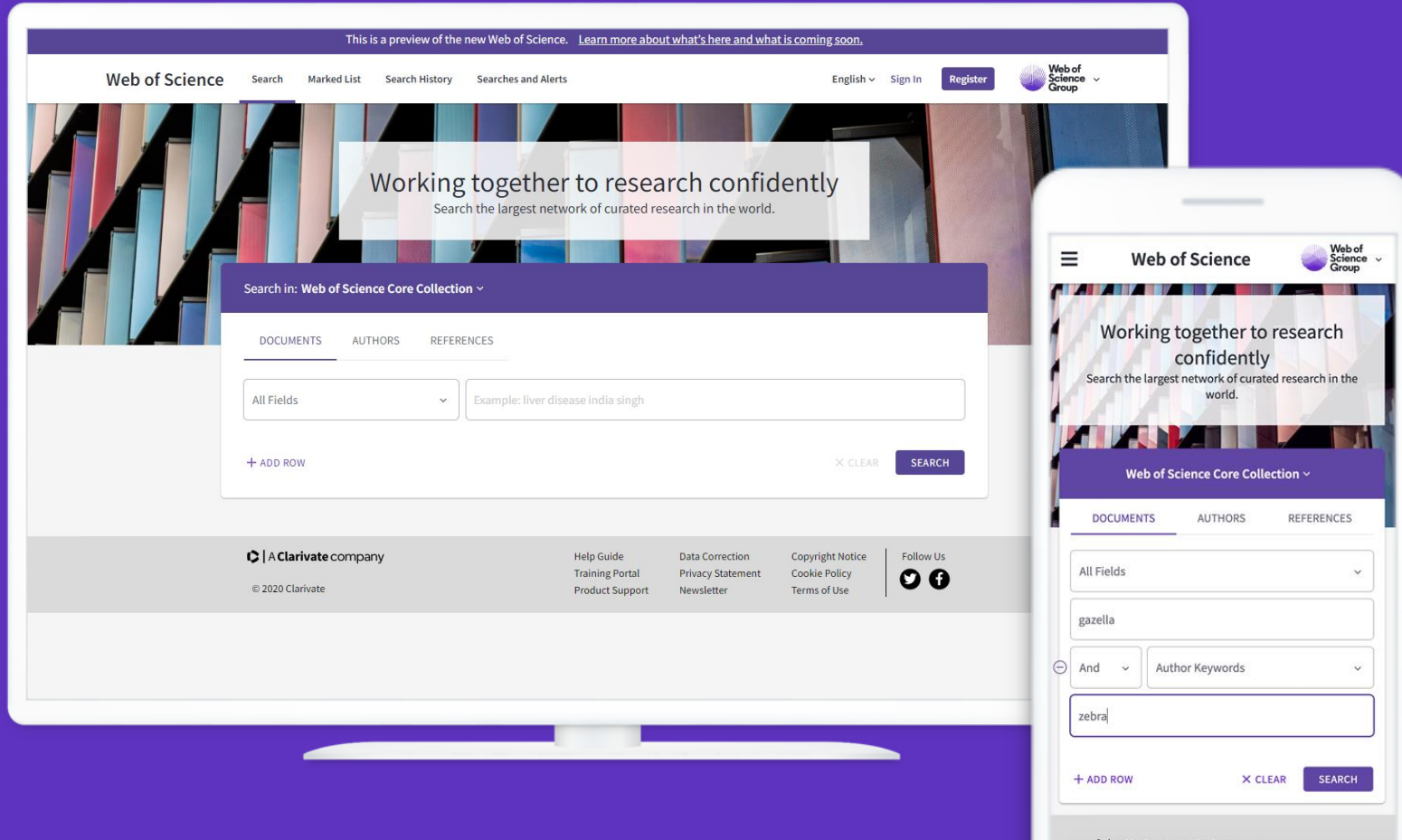
Save time and effort throughout your discovery process with a responsive, streamlined interface that supports both basic and advanced workflows.



## Ongoing iteration

New technology will allow us to release new features more frequently to respond to your feedback and introduce enhancements.

# The new Web of Science



## Save time and effort throughout the research workflow

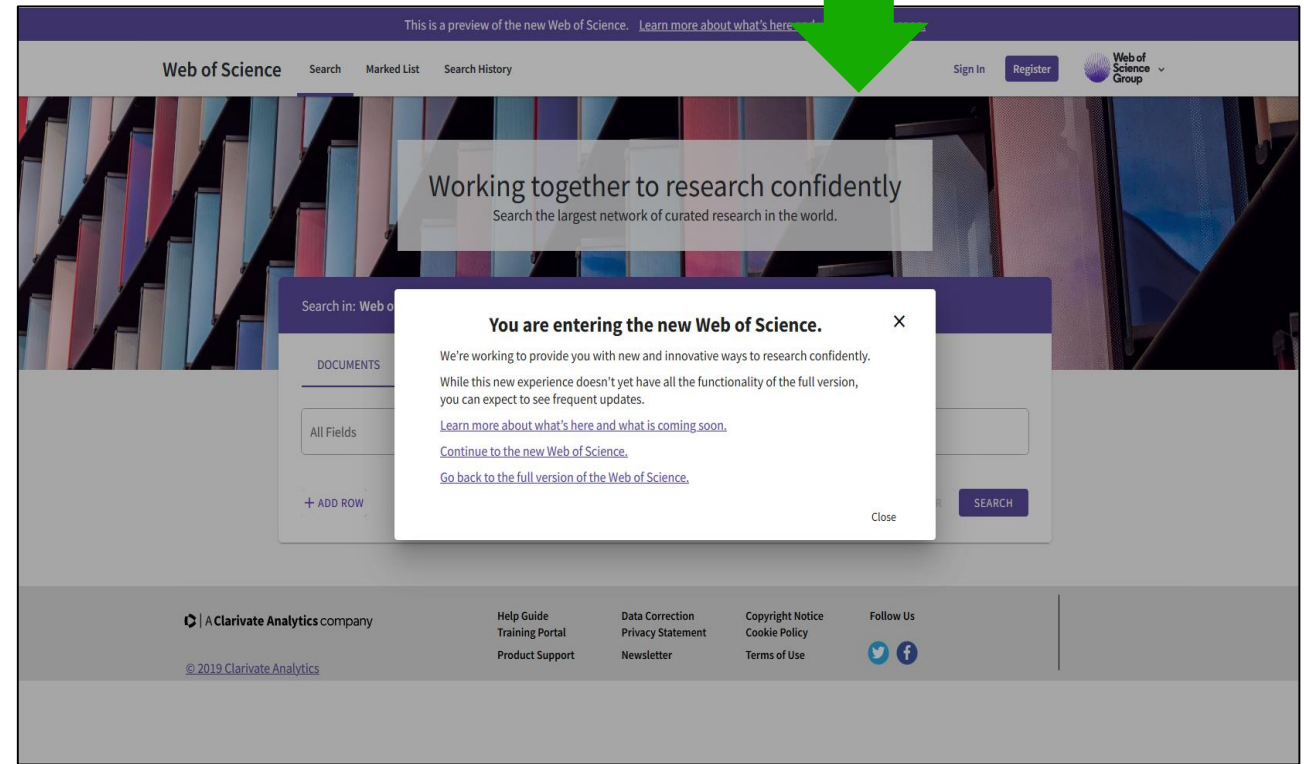
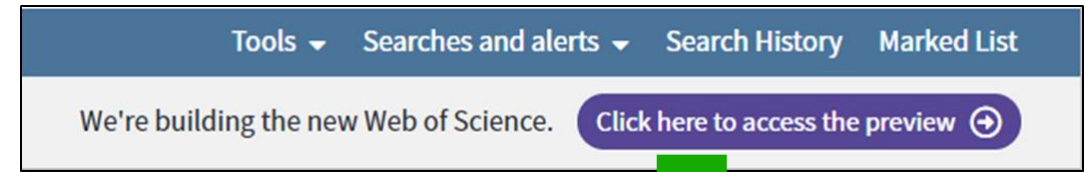
- Inclusive interface
- Faster page loads
- Improved design
- Ongoing iteration

MyRA mobile app [My Research Assistant]  
For iPhone and Android (under construction)

# Building the New Web of Science

Preview access and current features

- Access the preview via the current Web of Science platform
  - Search your full Web of Science Core Collection subscription
  - New Web of Science will be on a new domain, but you can only access it via the current version.
- **Features are added on an ongoing basis**



# The NEW Web of Science is under construction

## New designs and workflows

- Edit searches from the Search Results page
- Cleaner page design
- Improved navigation
- Better integrations

This is a preview of the new Web of Science. [Learn more about what's here and what is coming soon.](#)

Web of Science Search Marked List Search History Sign In Register Web of Science Group

14 results from the Web of Science Core Collection for:  
All Fields (post traumatic stress)

Refined by: Top Papers: Highly Cited Papers X Publication Years: 2019 X Clear all

Refine results

Search within results for...

Quick Filters

- Highly Cited Papers 14
- Hot Papers 2
- Review Articles 6
- Open Access 9

Publication Years

- 2019 14

See all

Document Types

- Articles 8
- Review Articles 6

0/14 ADD TO MARKED LIST SIGN IN FOR EXPORTING Relevance < 1 of 1 >

1 Enduring somatic threat perceptions and post-traumatic stress disorder symptoms in survivors of cardiac events  
Meli, L; Alcantara, C; (...); Edmondson, D  
Nov 2019 | Journal Of Health Psychology  
Post-traumatic stress disorder due to acute cardiovascular events may be uniquely defined by enduring perceptions of somatic threat. We tested whether post-traumatic stress disorder at 1 month post-acute coronary syndrome indeed required both high peritraumatic threat during the acute co...  
View full text

11 Citations  
48 References  
Related records

2 Association between traumatic stress load, psychopathology, and cognition in the Philadelphia Neurodevelopmental Cohort  
Barzilay, R; Calkins, ME; (...); Gur, RE  
Jan 2019 | Psychological Medicine  
Background. Traumatic stressors during childhood and adolescence are associated with psychopathology, mostly studied in the context of post-traumatic stress disorder (PTSD) and depression. We investigated broader associations of traumatic stress exposure with psychopathology and cognition in a you...  
View full text

11 Citations  
62 References  
Related records

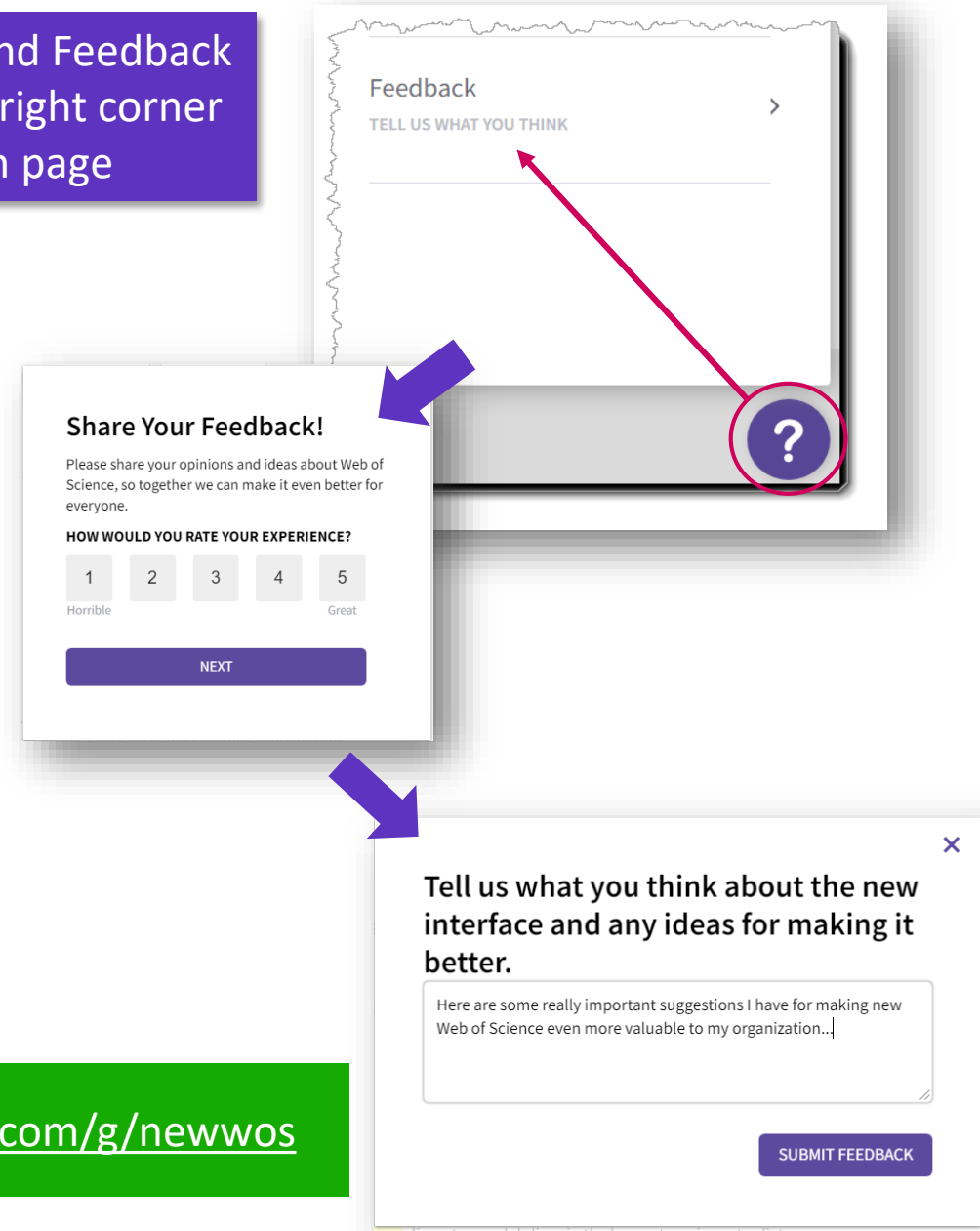
# How your feedback can help...

As we are building the new Web of Science:

- Contact us to make the new Web of Science available to your users
- **Use the preview!** We're analyzing usage, and your use of New Web of Science helps us improve designs and workflows
- Send us **direct feedback** via the platform
- **Check back often!** See what we've added to the preview and new features
- We'll be following up to incorporate your input

Join the Google Group for New Web of Science: <https://groups.google.com/g/newwos>

Help and Feedback  
Lower right corner  
of each page

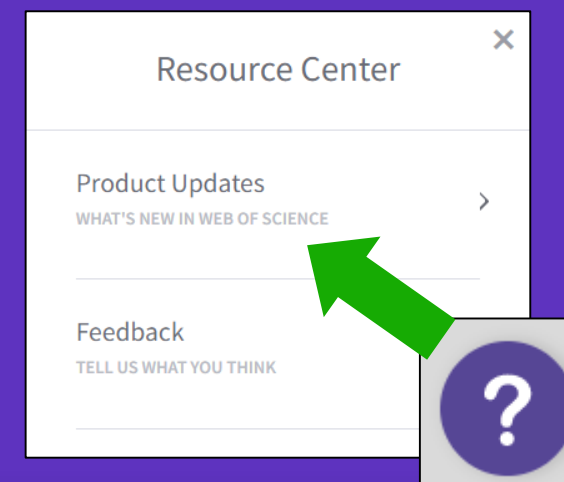




# Link from the home page to learn about the latest features

## New Web of Science

<https://clarivate.com/webofsciencegroup/release-notes/wos/>



Clarivate  
Web of Science™

Who we are for Products Resources Services ISI

## Web of Science Release Notes

We're working to improve the Web of Science to provide you with new ways to accelerate your research in the world's leading global citation database. You can find updates here outlining the functionality we've added to the new system so far, and what we'll be working on next.

### Learn more about our latest releases

#### New WOS September 1st Release Notes

Analyze Results, Chinese Science Citation Database, and more

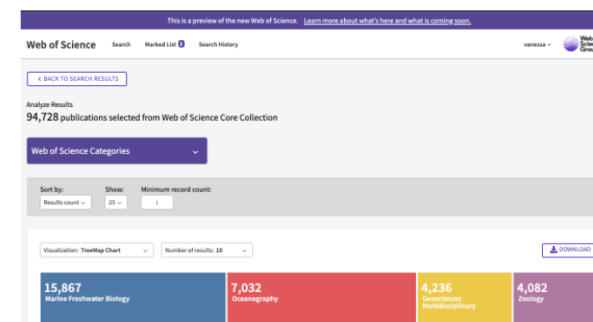
[Go to full release notes](#)

## New WOS September 1 Release Notes

Analyze Results, Chinese Science Citation Database, and more

### Analyze Results

Have you ever been overwhelmed by the number of results associated with your search and just needed a simple way to understand trends in that dataset? **Analyze Results** is the easiest way to work within your dataset to answer questions such as who should I collaborate with (analyze by Author), which journals are publishing papers on this topic (analyze by Publication Title), or which organizations are funding researchers in this topic (analyze by Funding Agency). By clicking the **Analyze Results** button in the upper right corner of the search results page, you can understand trends at a glance and you can download the visualization (and supporting data table) for future use. Use the dropdown in the upper left to view the other supported fields within the current database.





# Thank you

[wos-feedback@clarivate.com](mailto:wos-feedback@clarivate.com)